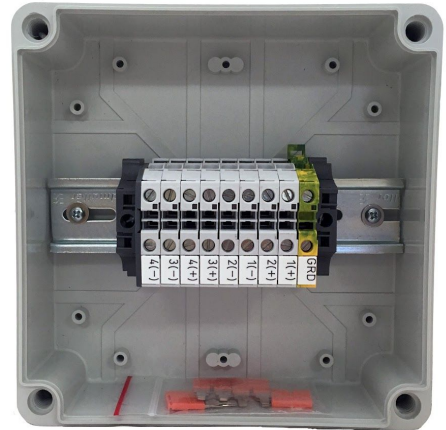


RU-2-LP

Residential DC String Transition Box

The Soltection RU-2-LP Box enables installers to transition and/or combine one to four DC strings to a single conduit, reducing costs by enabling installers to switch to standard building wire and simplifying connections in the enclosure. The low profile enclosure is designed to be mounted beneath the array using the optional box bracket accessory or adjacent to the array using racking system accessories.



Key Features

- **Mountable beneath the PV array.**
- **Works with string inverters and optimizers.**
- **NEMA 4X enclosure with 20 year usable outdoor life.**
- **Reduces overall cable and wire BOS costs.**
- **Simplifies installation and commissioning while reducing labor costs.**
- **More reliable than using wire nuts, U-joints, or wire taps.**

Electrical Specifications

Maximum Voltage: 600V AC / DC
Terminal Wire Size Range (One Conductor) : (1) #6-#24
Wire Size Range (Two Conductors): (2) #20-#12
Connector Type: Screw Clamp
Jumpers: (4) 2-Prong Jumpers
Maximum Current Per Terminal: 57A
Maximum Combined Current Per Terminal: 57A

Physical Specifications

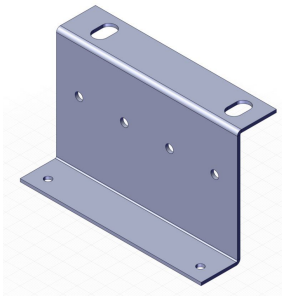
Enclosure Rating: NEMA 4X
Enclosure Material: VALOX™ Polycarbonate
Outer Dimensions: 7.01" x 7.01" x 3.13"
Shipping Carton Size: 7" x 8" x 4"
Shipping Weight: 1.37lb

Certifications:



Sample Wiring Diagrams for Model RU-1-LP:

Accessories for Model RU-1-LP:



SOLT-VM77-MKIT

Rail mounting bracket for
RU-2-LP transition box