

Model RU-1-LP

Residential AC String Transition Box

The Soltection RU-1-LP Box enables installers to transition up to two microinverter strings to a single conduit, reducing costs by enabling installers to switch to standard building wire. The low profile enclosure is designed to be mounted beneath the array using the optional box bracket accessory or adjacent to the array using racking system accessories and provides a touch-safe and secure means to transition strings.



Key Features

- **Mountable beneath the PV array.**
- **Works with most microinverter brands.**
- **NEMA 4X enclosure with 20 year usable outdoor life.**
- **Reduces overall cable and wire BOS costs.**
- **Simplifies installation and commissioning while reducing labor costs.**
- **More reliable than using wire nuts, U-joints, or wire taps.**

Electrical Specifications

Maximum Voltage: 600V AC / DC
Terminal Wire Size Range (One Conductor) : (1) #6-#24
Wire Size Range (Two Conductors): (2) #20-#12
Connector Type: Screw Clamp
Maximum Current Per Terminal: 57A

Physical Specifications

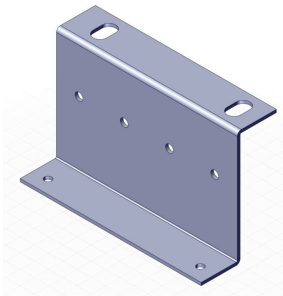
Enclosure Rating: NEMA 4X
Enclosure Material: VALOX™
Outer Dimensions: 6.72" x 3.17" x 3.61"
Shipping Carton Size: 7" x 4" x 4"
Shipping Weight: 1.07lb

Certifications:



Sample Wiring Diagrams for Model RU-1-LP:

Accessories for Model RU-1-LP:



SOLT-VM75-MKIT

Rail mounting bracket for
RU-1-LP transition box