

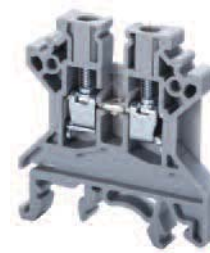
Altech "U" Series Universal Rail Mounting Standard Screw Clamp Feed through terminals are the most versatile terminals for wire-to-wire connection in control, automation, instrumentation and power distribution applications. A special design feature on the flexible foot enables easy mounting and dismounting from the DIN Rail with the help of a screwdriver.

The terminals with AEx eII Ex eII can be used in a potentially explosive atmosphere which may occur in chemical and petrochemical industry. These terminals can be used in Class 1, Zone 0, 1 & 2 hazardous locations. These terminal blocks comply to En 500019.



## CTS2.5U-N

## CTS4U-N



Terminal Width	5 mm			6 mm		
Height x Length	45 x 43 mm			45 x 43 mm		
Stripping Length	9 mm			9 mm		
Insulation Material	Polyamide 6.6			Polyamide 6.6		
Type of Connection	2 screw clamps & 1 tapped hole for cross connect.			2 screw clamps & 1 tapped hole for cross connect.		
Approvals						
Wire Range	22-12 AWG	0.5-2.5 sq.mm	22-14 AWG	22-10 AWG	0.5-4 sq.mm	22-10 AWG
Voltage Rating	600 V	800 V	600 V	600 V	800 V	600 V
Current Rating	25 A	24 A	20 A	35/40 A*	32 A	35/40A*
Torque	7 lb-in	0.4 Nm	7 lb-in	7 lb-in	0.5 Nm	7 lb-in

Other Approvals



### Terminal Block

End Plate	
Isolation Partition	
Separator Plate	

DIN Rail for ordering information refer to page 70



End Stop	
for ordering information refer to page 72	

Internal Jumper		2 pole	CA721/2	100	CA722/2	100
		3 pole	CA721/3	50	CA722/3	50
		4 pole	CA721/4	50	CA722/4	50
		10 pole	CA721/10	10	CA722/10	10
		100 pole	CA721/100	10	CA722/100	10

Insulated Internal Jumper		2 pole	CA741/2	100	CA742/2	100
		3 pole	CA741/3	50	CA742/3	50
		4 pole	CA741/4	50	CA742/4	50
		10 pole	CA741/10	10	CA742/10	10
		100 pole	CA741/100	10	CA742/100	10

Current Bars		2 pole	CA703/01	100	CA703/1	100
		3 pole	CA704/01	100	CA704/1	100
		4 pole	CA705/01	100	CA705/1	100
		10 pole	CA731/10	100	CA732/10	100
		10 pole (breakable)	—	—	CA732/10-A	100
		100 pole	CA731/100	10	CA732/100	10

Shorting Sleeve & Screw		CA 707/S/Q/01	100	CA707/S/Q/01	100
-------------------------	--	---------------	-----	--------------	-----

External Jumper		2 pole	CA717/2	100	CA713/2	100
		3 pole	CA717/3	100	CA713/3	100
		4 pole	CA717/4	100	CA713/4	50
		10 pole	CA717/10	25	CA713/10	25

Marking Tags		MT5	100	MT6	100
		MT6F	10	MT6F	10

**COLOR BLOCKS**  
(other than grey standard)

When ordering please add color suffix to Cat. No.

Example: CTS2.5U-N/R

Color	Ordering Suffix
Red	R
Blue	BU
Black	BL
Orange	O
Green	G
Yellow	Y
White	W
Beige	BG
Dark Brown	DB

\* 35A with one No. 10 AWG and 40A with two No. 12 AWG wires.

**CTS6U**

**CTS10U**

**CTS16U**

**CTS25U**



8 mm

10 mm

12 mm

12 mm

47 x 43 mm

47 x 43 mm

47 x 43 mm

56 x 49 mm

12 mm

12 mm

16 mm

18 mm

Polyamide 6.6

Polyamide 6.6

Polyamide 6.6

Polyamide 6.6

2 screw clamps & 1 tapped hole for cross connect.

2 screw clamps & 1 tapped hole for cross connect.

2 screw clamps & 1 tapped hole for cross connect.

2 screw clamps & 1 tapped hole for cross connect.

22-8 AWG	1.5-6 sq.mm	22-8 AWG
600 V	750 V	600 V
50 A	41 A	50 A
9 lb-in	0.8 Nm	14 lb-in

22-6 AWG	1.5-10 sq.mm	16-6 AWG
600 V	750 V	600 V
65 A	57 A	65 A
14 lb-in	1.2 Nm	14 lb-in

22-6 AWG	2.5-16 sq.mm	20-4 AWG
600 V	800 V	600 V
70 A	76 A	85 A
14 lb-in	1.2 Nm	14 lb-in

12-2 AWG	6-25 sq.mm	14-2 AWG
600 V	800 V	600 V
115 A	101 A	115 A
25 lb-in	2.0 Nm	25 lb-in



Cat. No.	Std. Pk.
<b>CTS6U</b>	50
EP6/10U	50
PP6/10U	50
SP6/10U	100

Cat. No.	Std. Pk.
<b>CTS10U</b>	50
EP6/10U	50
PP6/10U	50
SP6/10U	100

Cat. No.	Std. Pk.
<b>CTS16U</b>	50
SP6/10U	100

Cat. No.	Std. Pk.
<b>CTS25U</b>	50
EP25U	
PP25UN	50



CA702	50
CA802	50

CA702	50
CA802	50

CA702	50
CA802	50

CA702	50
CA802	50

CA723/2	100
CA723/3	50
CA723/4	50
CA723/10	10

CA724/2	100
CA724/3	50
CA724/4	50
CA724/10	10

CA751/2	50
CA751/3	50
CA751/4	50
CA751/10	10

CA725/2	50
CA725/3	25
CA725/4	25
CA725/10	10

CA743/2	100
CA743/3	50
CA743/4	50
CA743/10	10

CA744/2	100
CA744/3	50
CA744/4	50
CA744/10	10

CA761/2	50
CA761/3	50
CA761/4	50
CA761/10	10

CA745/2	50
CA745/3	25
CA745/4	25
CA745/10	10

CA703/2	100
CA704/2	100
CA705/2	100
CA733/10	100

CA703/3	100
CA704/3	100
CA705/3	100
CA734/10	100

CA703/8	100
CA704/8	100
CA705/8	100
CA739/10	100

CA703/4	100
CA704/4	100
CA705/4	100
CA735/10	100

CA707/S/Q/1	100
-------------	-----

CA707/S/Q/1	100
-------------	-----

CA707/S/Q/5	100
-------------	-----

CA707/S/Q/2	100
-------------	-----

CA710/2	100
CA710/3	100
CA710/4	100
CA710/10	25

CA718/2	100
CA718/3	50
CA718/4	50
CA718/10	25

MT8	100
MT6F	10

MT12	100
MT6F	10

MT8	100
MT6F	10

MT10	100
MT6F	10

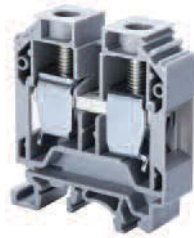
MT12	100
MT6F	10

MT12	100
MT6F	10

# Feed-Through



	CTS35U			CTS35UN			CTS50U			CTS95U		
--	--------	--	--	---------	--	--	--------	--	--	--------	--	--



Terminal Width	15 mm			16 mm			20.5 mm			25 mm		
Height x Length	58 x 52.5 mm			58 x 52.5 mm			75.5 x 71 mm			90 x 83 mm		
Stripping Length	18 mm			18 mm			22 mm			24 mm		
Insulation Material	Polyamide 6.6			Polyamide 6.6			Polyamide 6.6			Polyamide 6.6		
Type of Connection	2 screw clamps & 1 tapped hole for cross			2 screw clamps & 1 tapped hole for cross			2 screw clamp connections			2 screw clamp connections		
Approvals												
Wire Range	8-2 AWG	10-35 sq.mm	8-2 AWG	2-12 AWG	4-35 sq.mm	2-12 AWG	6-2/0 AWG	16-50 sq.mm	6-2/0 AWG	2-4/0 AWG	25-95 sq.mm	2-4/0 AWG
Voltage Rating	600 V	750 V	600 V	600 V	750 V	600 V	600V	1000 V	600 V	600V	1000 V	600 V
Current Rating	145 A	125 A	145 A	130 A	125 A	130 A	150 A	150 A	150 A	230 A	232 A	230 A
Torque	25 lb-in	2.5 Nm	25 lb-in	25 lb-in	2.5 Nm	25 lb-in	60 lb-in	6.8 Nm	60 lb-in	160 lb-in	18.2 Nm	160 lb-in

Other Approvals									
-----------------	--	--	--	--	--	--	--	--	--

	Cat. No.	Std. Pk.	Cat. No.	Std. Pk.	Cat. No.	Std. Pk.	Cat. No.	Std. Pk.
--	----------	----------	----------	----------	----------	----------	----------	----------

<b>Terminal Block</b>	<b>CTS35U</b>	50	<b>CTS35UN</b>	50	<b>CTS50U</b>	10	<b>CTS95U</b>	10
-----------------------	---------------	----	----------------	----	---------------	----	---------------	----

<b>Isolation Partition</b>	PP35U	50	PP35UN	50				
----------------------------	-------	----	--------	----	--	--	--	--

<b>DIN Rail</b> for ordering information refer to page 70								
--	--	--	--	--	--	--	--	--

<b>End Stop</b> for ordering info. refer to page 72	CA702	50	CA702	50	CA202	50	CA202	50
	CA802	50	CA802	50	CA102	50	CA102	50

<b>Internal Jumper</b>	2 pole	CA726/2	50	CA771/2	50			
	3 pole	CA726/3	25	CA771/3	25			
	4 pole	CA726/4	25	CA771/4	25			
	10 pole	CA726/10	10	CA771/10	10			
	100 pole							

<b>Insulated Internal Jumper</b>	2 pole	CA746/2	50	CA781/2	50			
	3 pole	CA746/3	25	CA781/3	25			
	4 pole	CA746/4	25	CA781/4	25			
	10 pole	CA746/10	10	CA781/10	10			
	100 pole							

<b>Current Bars</b>	2 pole	CA703/5	100	CA703/10	100			
	3 pole	CA704/5	100	CA704/10	100			
	4 pole	CA705/5	100	CA705/10	100			
	10 pole	CA736/10	100	CA770/10	100			
	10 pole (breakable)							
	100 pole							

<b>Shorting Sleeve &amp; Screw</b>	CA707/S/Q/2	100	CA707/S/Q/2	100				
------------------------------------	-------------	-----	-------------	-----	--	--	--	--

<b>External Jumper</b>	2 pole							
	3 pole							
	4 pole							
	10 pole							

<b>Marking Tags</b>	MT15	100	MT16	100	MT20	100	MT25	100
	MT6F	10	MT6F	10	MT6F	10	MT6F	10