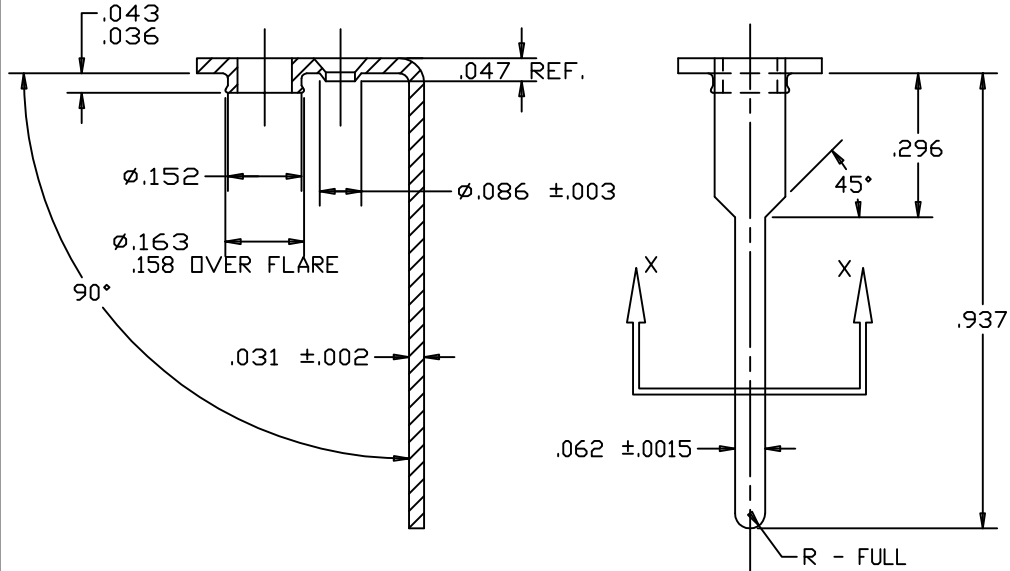
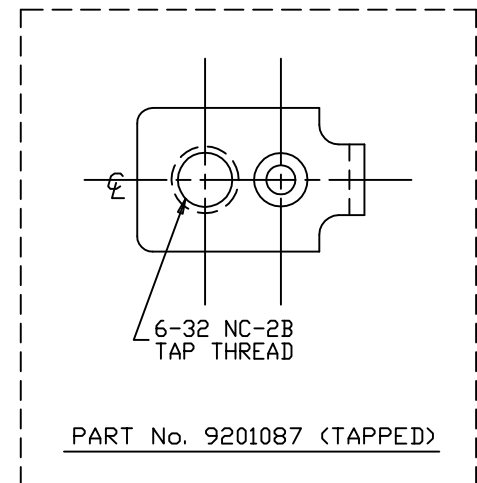
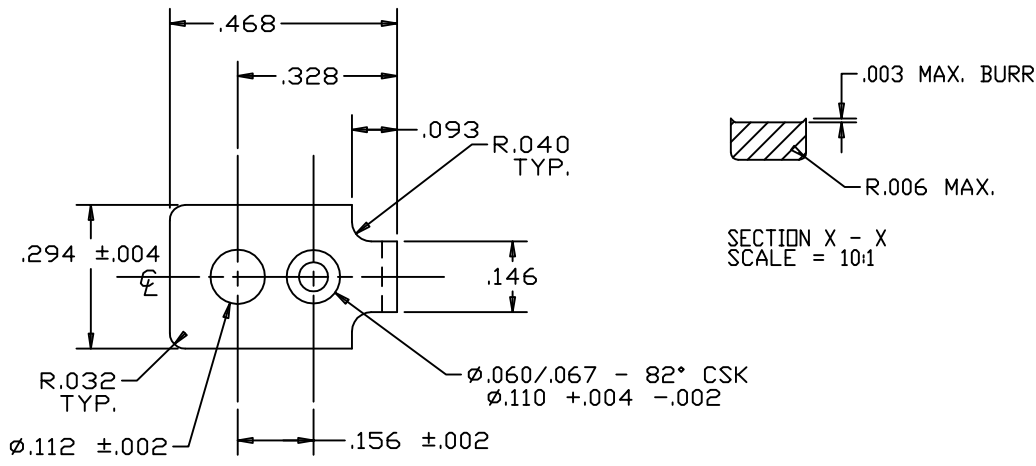


FSCM 26405  
 PROPRIETARY NOTICE  
 THIS DRAWING, THE DESIGN AND INFORMATION ARE THE PROPERTY OF MARATHON SPECIAL PRODUCTS. THEY ARE NOT TO BE REPRODUCED OR DISCLOSED TO THIRD PARTIES.

REV	EDR	CHANGE	BY	DATE
M	7/96	REDRAWN ON CAD	MAL	5/15/96
N	140/08	FINISH WAS KULKA TYPE 145 CU IN, ADDED PLATING CERT. NOTE	JAB	11/24/08



SCALE = 4:1

- NOTES:  
 1) TOOLING IS SIMILAR TO: (NONE)  
 2) KULKA P/N WAS 0670.093.081 & 0670.093.011  
 3) PLATING CERTIFICATION REQUIRED.

PART No. 9201081 (UNTAPPED)

DESCRIPTION	PART NUMBER	MATERIAL	FINISH
TAPPED AND PLATED	9201087	MAKE FROM: 9201081 TAP #6-32 NC-2B	.0002 MIN DULL TIN OVER .0001 NICKEL
AS PURCHASED UNTAPPED	9201081	70/30 CARTRIDGE BRASS CDA ALLOY C26000 TEMPER: 3/4 HARD	UNPLATED

UNLESS OTHERWISE SPECIFIED:		TOLERANCES		MARATHON SPECIAL PRODUCTS		BOWLING GREEN OHIO	
THREADS ARE UNIFIED NATIONAL		ALL DIMENSIONS INCHES		MATERIAL SEE TABLE		FINISH SEE TABLE	
SERIES (UND)	EXTERNAL GLASS BA	FRACTIONS	±1/64 (0.4)	DRAWN	MAL	CHECKED	APP.
INTERNAL GLASS 2B	INTERNAL GLASS 2B	DECIMALS (0.00)	±.001 (0.2)	5/15/96			
THREADS SHALL BE TO GAUGE FIT	AFTER PLATING OR OTHER FINISH	DECIMALS (0.000)	±.0005 (0.1)	SERIES		LATEST CHANGE	
		ANGLES	± 1°	PART NO.			
SURFACE SHALL BE SMOOTH, AND FREE OF TOOL MARKS, BREAK ALL SHARP CORNERS AND REMOVE BURRS.	HOLE #	±.003 (0.08)	-.001 (0.02)	TITLE			
	CONCENTRICITY TO CENTER AXIS	±.002 (0.05)		3000 670A UNTAPED UNPLATED		9201081	