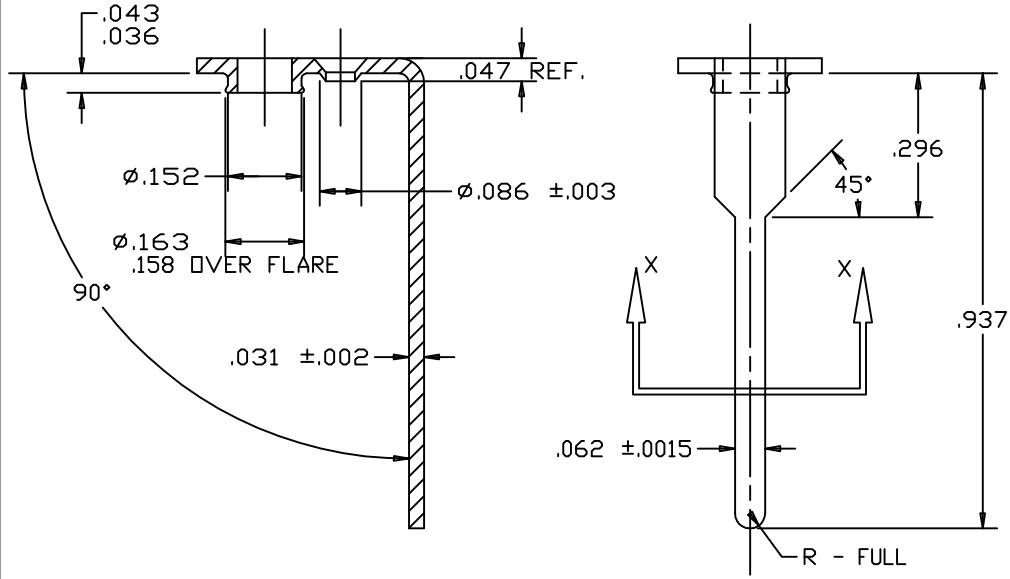
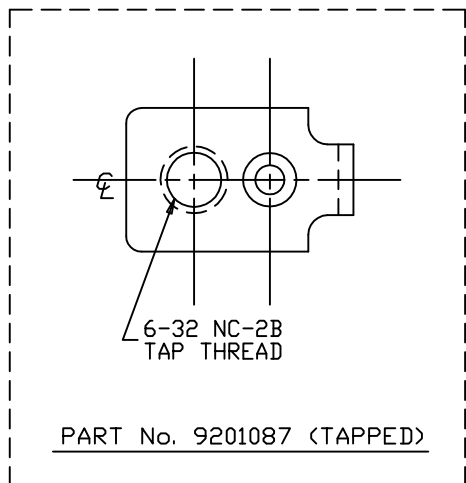
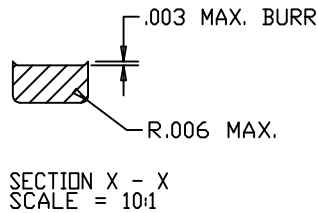
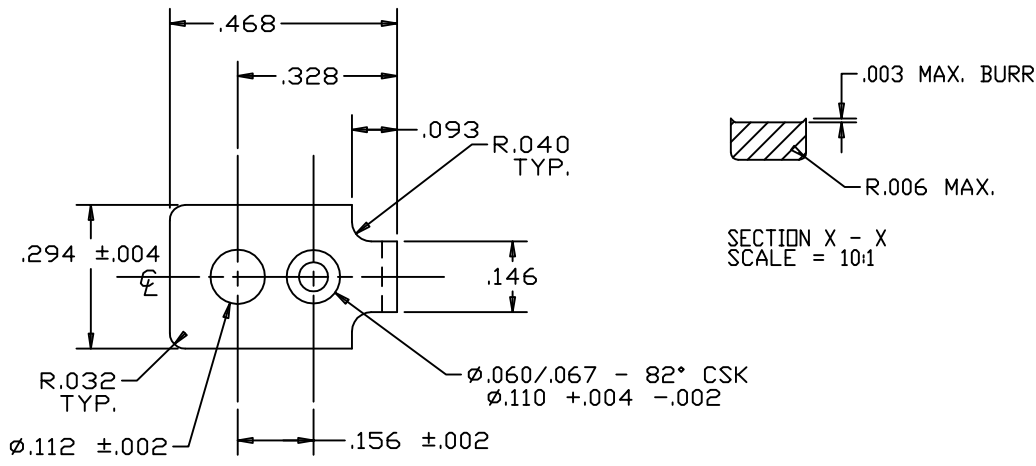


FSCM 26405
 PROPRIETARY NOTICE
 THIS DRAWING, THE DESIGN AND INFORMATION ARE THE PROPERTY OF MARATHON SPECIAL PRODUCTS. THEY ARE NOT TO BE REPRODUCED OR DISCLOSED TO THIRD PARTIES.

REV	EDR	CHANGE	BY	DATE
M	7/96	REDRAWN ON CAD	MAL	5/15/96
N	140/08	FINISH WAS KULKA TYPE 145 CU IN, ADDED PLATING CERT. NOTE	JAB	11/24/08



PART No. 9201081 (UNTAPPED)

SCALE = 4:1

- NOTES:
 1) TOOLING IS SIMILAR TO: (NONE)
 2) KULKA P/N WAS 0670.093.081 & 0670.093.011
 3) PLATING CERTIFICATION REQUIRED.

DESCRIPTION	PART NUMBER	MATERIAL	FINISH
TAPPED AND PLATED	9201087	MAKE FROM: 9201081 TAP #6-32 NC-2B	.0002 MIN DULL TIN OVER .0001 NICKEL
AS PURCHASED UNTAPPED	9201081	70/30 CARTRIDGE BRASS CDA ALLOY C26000 TEMPER: 3/4 HARD	UNPLATED

UNLESS OTHERWISE SPECIFIED:		MARATHON SPECIAL PRODUCTS BOWLING GREEN OHIO	
THREADS ARE UNIFIED NATIONAL	TOLERANCES ALL DIMENSIONS INCHES	MATERIAL SEE TABLE FINISH SEE TABLE	
SERIES (UND)	FRACTIONS (0.00)	DRAWN	DATE
EXTERNAL GLASS BA	DECIMALS (0.00)	MAL	5/15/96
INTERNAL GLASS 2B	THREDS (0.000)	CHECKED	APP.
THREDS SHALL BE TO GAUGE FIT AFTER PLATING OR OTHER FINISH	ANGLES (0.00)	SERIES	
	HOLE #	PART NO.	
	CONCENTRICITY TO CENTER AXIS	TITLE	
		3000 670A UNTAPED UNPLATED	
		9201081	
		LATEST CHANGE	
		N	