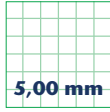
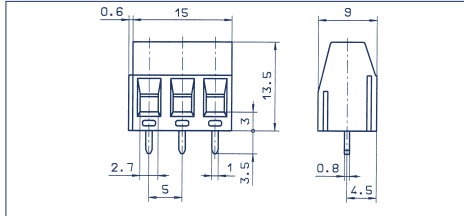
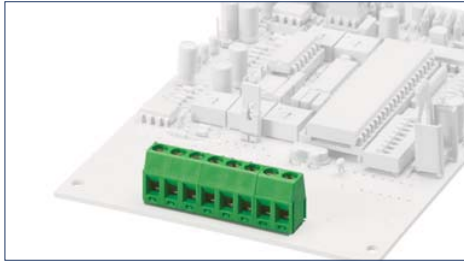


Terminals

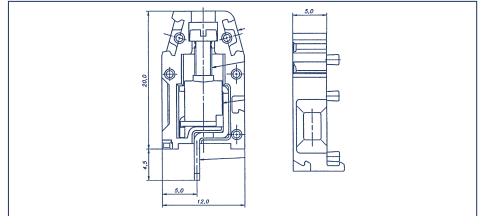
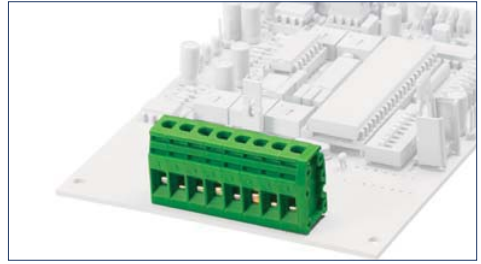


5,00 mm

PK 350/... /5,00-V vertical



PK 2,5/... /5,00 vertical



Drawings

Connection principle

Dimensions

Spacing mm	5,00
Insulation stripping length mm	6,00
PCB hole diameter mm	1,30

Connection data

Single wire (solid) mm ²	2,50
Stranded wire (flexible) mm ²	1,50
Stranded wire (with ferrules) mm ²	1,50

Rating

	300 V	250 V
Rated voltage V	300 V	250 V
Rated current A	16 A	24 A (T60)
Cross section max. AWG/mm ²	28-12	2,50
Rated surge voltage	–	2,00 kV
Rated torque/Screw size	–	0,50 Nm/M3
Contamination degree	–	–

Materials

Insulating material/Flammability class	PA 6.6 V0 / UL 94 V0
Temperature Range	-30°C / +105°C
Clamping part	CuZn
Clamping cage/Eccentric	–
Contact pin	–
Cage tension spring	–
Wire protection	–
Soldering lug	Cu
Contact Spring	–

Order information

Standard colour(s)
(further colours on request, see page 5)

No. of poles	Cat.-No.	Qty.p.pck.
	● green (Ral 6018)	
2	10357.1	50
3	10358.1	50
4	10359.1	50
5	10360.1	50
6	10361.1	50
7	10362.1	50
8	10363.1	50
9	10364.1	50
10	10365.1	50
11	10366.1	50
12	10367.1	50
13	12349.1	50
14	12350.1	50
15	12351.1	50
16	12352.1	50
17	12353.1	50
18	12354.1	50
19	12355.1	50
20	12356.1	50
21	12357.1	50
22	12358.1	50
23	12359.1	50
24	12360.1	50

Strain-relief-clamp

Strain-relief-clamp

	250 V	300 V	250 V
Rated voltage V	250 V	300 V	250 V
Rated current A	15 A	15 A	16 A
Cross section max. AWG/mm ²	22-14	22-14	2,50
Rated surge voltage	–	–	4,00 kV
Rated torque/Screw size	–	–	0,60 Nm/M2,5
Contamination degree	–	–	–

Insulating material/Flammability class	PA 6.6 V2 / UL 94 V2
Temperature Range	-30°C / +105°C
Clamping part	St4
Clamping cage/Eccentric	–
Contact pin	–
Cage tension spring	–
Wire protection	–
Soldering lug	Cu
Contact Spring	–

Order information

No. of poles	Cat.-No.	Qty.p.pck.
	● green ● orange (Ral 6018) (Ral 2011)	
2	5002.1 5002.3	50
3	5003.1 5003.3	50
4	5004.1 5004.3	50
5	5005.1 5005.3	50
6	5006.1 5006.3	50
7	5007.1 5007.3	50
8	5008.1 5008.3	50
9	5009.1 5009.3	50
10	5010.1 5010.3	50
11	5011.1 5011.3	50
12	5012.1 5012.3	50
13	5013.1 5013.3	50
14	5014.1 5014.3	50
15	5015.1 5015.3	50
16	5016.1 5016.3	50
17	5017.1 5017.3	50
18	5018.1 5018.3	50
19	5019.1 5019.3	50
20	5020.1 5020.3	50
21	5021.1 5021.3	50
22	5022.1 5022.3	50
23	5023.1 5023.3	50
24	5024.1 5024.3	50

Accessories

Marking

Page 126 - 129

Page 126 - 129