

Material:

- Body: Polyamide 6
- Seal: Neoprene

Characteristics:

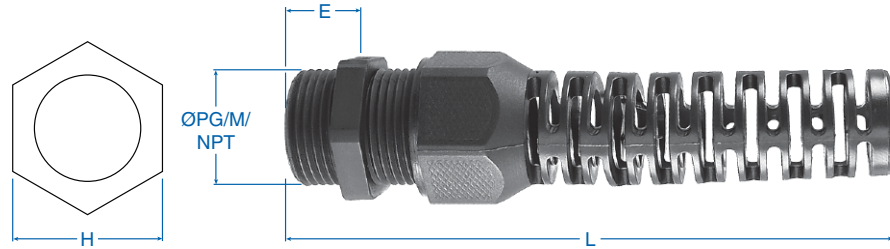
PG/Metric/NPT threads
Metric extended thread available



Temperature Range PA -20 to 100°C (-4 to 212°F)

Technical properties:

- Optimal strain relief through clamping range
- Seals against housing through sealing lip
- Trapezoidal threading with high torque guarantees tight and permanent fit of the dome nut
- Also available with reduction insert
- Gas- and watertight



Applications:

- Machines and devices

Outer thread	Clamping range mm	Cat. No. Dark Grey	Cat. No. Black	Std. Pk.	Thread Size	Dimensions			
						H mm	E mm	L mm	ØPG/M/NPT mm
PG									
PG 7	2.5 - 6.5	5306007	5306107	50	PG7	15	8	62	12.5
PG 9	3 - 8	5306009	5306109	50	PG9	19	8	72	15.2
PG 11	4 - 10	5306011	5306111	50	PG11	22	8	85	18.6
PG 11	2 - 7	5306012	5306112	50	PG13.5	24	9	97	20.4
PG 13.5	5.5 - 12	5306013	5306113	50	PG16	27	10	112	22.5
PG 13.5	3 - 7	5306014	5306114	50	M 12x1.5	15	6	60	12
PG 16	8.5 - 14	5306016	5306116	25	M 16x1.5	19	6	70	16
PG 16	5 - 11	5306017	5306117	25	M 20x1.5	24	8	96	20
					NPT 3/8"	19/22	15	79	17.1
					NPT 1/2"	24	15	103	21.2
Metric									
M 12 x 1.5	2.5 - 6.5	5306030	5306130	50					
M 16 x 1.5	4 - 8	5306031	5306131	50					
M 20 x 1.5	3 - 7	5306032	5306132	50					
M 20 x 1.5	5.5 - 12	5306033	5306133	50					
NPT									
NPT 3/8"	3 - 8	5306050	5306150	50					
NPT 1/2"	3 - 7	5306051	5306151	50					
NPT 1/2"	5.5 - 12	5306052	5306152	50					