

**Insulated  
Industry Standard**

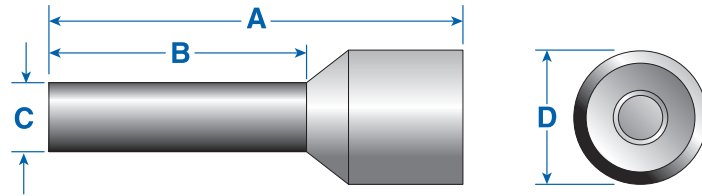
Ferrules insure reliable electrical connections when terminating stranded flexible wire in terminal blocks, circuit breakers or other control devices. Insulated ferrules prevent conductor breakage due to bending, wire stress or vibration while facilitating wire insertion into the terminal clamp.

Altech's standard insulated ferrules are color coded by conductor size for convenient identification.

To ensure efficient ferrule crimping, always select the smallest ferrule diameter that fits the wire and use only professional crimping tools. (Please refer to the ordering pages and the Crimper Selector Guide on page 98.)

- Sleeve: polypropylene
- Tube: tin-plated copper

**INDUSTRY STANDARD FERRULES**



**Tested According To:**

- CSA Std C22.2 No. 65-93 - Wire Connectors
- CSA Std C22.2 No. 188-M1983 - Splicing Wire and Cable Connectors
- ANSI/UL Std No. 486A - Wire Connectors and Soldering Lugs for Use with Copper Conductors
- ANSI/UL Std No. 486C - Splicing Wire Connectors

AWG (mm2)	Color	Type	Cat. No.	Stripping Length mm (in.)	A	B	C	D	Std. Pk.*
24 (.25)	Lt. Blue	H0.25/6	2620.0	6.0(.24)	10.0 (.39)	6.0 (.24)	1.2 (.05)	2.3 (.09)	500/100
24 (.25)	Lt. Blue	H0.25/8	2621.0	8.0(.31)	12.0 (.47)	8.0 (.31)	1.2 (.05)	2.3 (.09)	500/100
22 (.34)	Turquoise	H0.34/6	2622.0	6.0(.24)	10.0 (.39)	6.0 (.24)	1.2 (.05)	2.5 (.10)	500/100
22 (.34)	Turquoise	H0.34/8	2623.0	8.0(.31)	12.0 (.47)	8.0 (.31)	1.2 (.05)	2.5 (.10)	500/100
20 (.50)	Orange	H0.50/6	2397.0	6.0(.24)	12.0 (.47)	6.0 (.24)	1.3 (.05)	2.8 (.11)	500/100
20 (.50)	Orange	H0.50/8	2201.0	8.0(.31)	14.0 (.55)	8.0 (.31)	1.3 (.05)	2.8 (.11)	500/100
18 (.75)	White	H0.75/6	2398.0	6.0(.24)	12.0 (.47)	6.0 (.24)	1.5 (.06)	3.3 (.13)	500/100
18 (.75)	White	H0.75/8	2202.0	8.0(.31)	14.0 (.55)	8.0 (.31)	1.5 (.06)	3.3 (.13)	500/100
18 (1.00)	Yellow	H1.00/6	2399.0	6.0(.24)	12.0 (.47)	6.0 (.24)	1.7 (.07)	3.5 (.14)	500/100
18 (1.00)	Yellow	H1.00/8	2203.0	8.0(.31)	14.0 (.55)	8.0 (.31)	1.7 (.07)	3.5 (.14)	500/100
16 (1.50)	Red	H1.50/8	2204.0	8.0(.31)	14.0 (.55)	8.0 (.31)	2.0 (.08)	4.0 (.16)	500/100
16 (1.50)	Red	H1.50/10	2400.0	10.0(.39)	16.0 (.63)	10.0 (.39)	2.0 (.08)	4.0 (.16)	500/100
16 (1.50)	Red	H1.50/18	2205.0	18.0(.71)	24.0 (.94)	18.0 (.71)	2.0 (.08)	4.0 (.16)	500/100
14 (2.50)	Blue	H2.50/8	2206.0	8.0(.31)	14.0 (.55)	8.0 (.31)	2.5 (.10)	4.7 (.19)	500/100
14 (2.50)	Blue	H2.50/12	2401.0	12.0(.47)	18.0 (.71)	12.0 (.47)	2.5 (.10)	4.7 (.19)	500/100
14 (2.50)	Blue	H2.50/18	2207.0	18.0(.71)	24.0 (.94)	18.0 (.71)	2.5 (.10)	4.7 (.19)	500/100
12 (4.00)	Gray	H4.00/10	2208.0	10.0(.39)	17.0 (.67)	10.0 (.39)	3.2 (.13)	5.4 (.21)	500/100
12 (4.00)	Gray	H4.00/12	2402.0	12.0(.47)	20.0 (.79)	12.0 (.47)	3.2 (.13)	5.4 (.21)	500/100
12 (4.00)	Gray	H4.00/18	2209.0	18.0(.71)	26.0 (1.02)	18.0 (.71)	3.2 (.13)	5.4 (.21)	100
10 (6.00)	Black	H6.00/12	2210.0	12.0(.47)	20.0 (.79)	12.0 (.47)	3.9 (.15)	6.9 (.27)	100
10 (6.00)	Black	H6.00/18	2211.0	18.0(.71)	26.0 (1.02)	18.0 (.71)	3.9 (.15)	6.9 (.27)	100
8 (10.00)	Ivory	H10.0/12	2212.0	12.0(.47)	22.0 (.87)	12.0 (.47)	4.9 (.19)	8.4 (.33)	100
8 (10.00)	Ivory	H10.0/18	2213.0	18.0(.71)	28.0 (1.10)	18.0 (.71)	4.9 (.19)	8.4 (.33)	100
6 (16.00)	Green	H16.0/12	2214.0	12.0(.47)	24.0 (.94)	12.0 (.47)	6.2 (.24)	9.6 (.38)	100
6 (16.00)	Green	H16.0/18	2215.0	18.0(.71)	28.0 (1.10)	18.0 (.71)	6.2 (.24)	9.6 (.38)	100
4 (25.00)	Brown	H25.0/18	2267.0	18.0(.71)	30.0 (1.18)	18.0 (.71)	7.7 (.30)	12.0(.47)	50
4 (25.00)	Brown	H25.0/22	2272.0	22.0(.87)	36.0 (1.42)	22.0 (.87)	7.7 (.30)	12.0(.47)	50
2 (35.00)	Beige	H35.0/18	2276.0	18.0(.71)	30.0 (1.18)	18.0 (.71)	8.7 (.34)	13.5(.53)	50
2 (35.00)	Beige	H35.0/25	2390.0	25.0(.98)	39.0 (1.54)	25.0 (.98)	8.7 (.34)	13.5(.53)	50
1 (50.00)	Olive	H50.0/20	2500.0	20.0(.79)	36.0 (1.42)	20.0 (.79)	10.9(.43)	16.0(.63)	50
2/0 (70.00)	Yellow	H70.0/21	2786.0	20.0(.79)	37.0 (1.46)	20.0 (.79)	13.4(.53)	17.0(.67)	25
3/0 (95.00)	Red	H95.0/25	2787.0	25.0(.98)	44.0 (1.73)	25.0 (.98)	15.4(.61)	19.0(.75)	25
4/0 (120.00)	Blue	H120.0/27	2788.0	27.0(1.06)	48.0 (1.89)	27.0 (1.06)	17.6(.69)	22.4(.88)	25
250MCM(150.0)	Yellow	H150.0/27	2789.0	32.0(1.26)	58.0 (2.28)	32.0 (1.26)	20.5(.81)	25.0(.98)	25

**CRIMPER SELECTOR  
GUIDE**  
See page 109.

\* Different standard packs are available as shown. To order the desired standard pack, please use the quantity required as a suffix to the cat. no.  
Example for 100 standard pack: Type H0.25/6, Cat. No. 2620.0/100